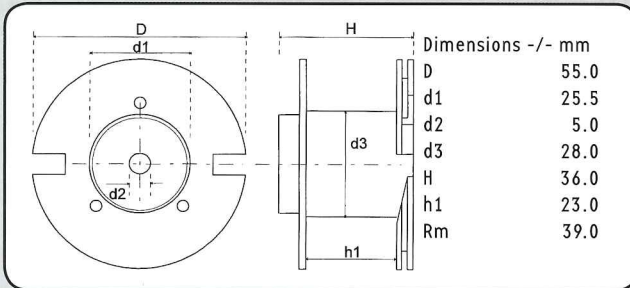
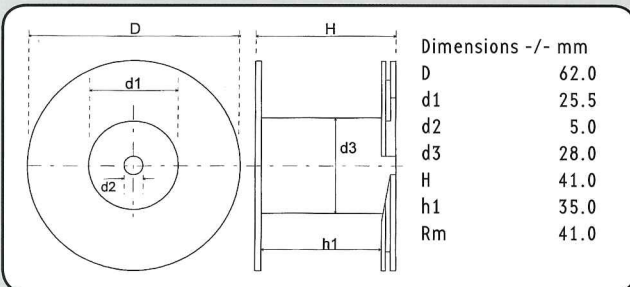


COROBAR® - INDUCTORS

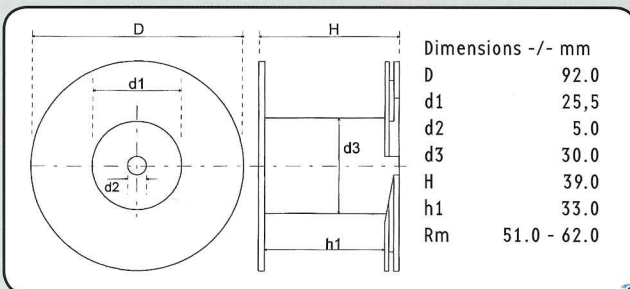

Copper Wire Ø: 1.40 mm
 CU Purity: > 99.99 %
 Connection Length: 10 mm ab 92; 40 mm
 Tin Coated Length: min. 9 mm
 Reel Material: ABS
 Core Type: COROBAR Core with drill-hole
 L-tolerance: ± 5 %
 L-Value: Nom. 25° C and 1-kHz


CO 55/36
Corobar 55/36 • CU 1.40 mm • Cross-Section 1.54 mm² AWG 15

Description	L/mH	R/0hm	Order Number
C055/1.0/140	1.00	0.19	134 0930
C055/1.2/140	1.20	0.22	134 0932


CO 62/41
Corobar 62/41 • CU 1.40 mm • Cross-Section 1.54 mm² AWG 15

Description	L/mH	R/0hm	Order Number
C062/1.5/140	1.50	0.24	134 0934
C062/1.8/140	1.80	0.27	134 0936
C062/2.2/140	2.20	0.29	134 0938
C062/2.7/140	2.70	0.34	134 0940
C062/3.0/140	3.00	0.36	134 0942
C062/3.3/140	3.30	0.38	134 0944
C062/3.9/140	3.90	0.42	134 0945


CO 92/39
Corobar 92/39 • CU 1.40 mm • Cross-Section 1.54 mm² AWG 15

Description	L/mH	R/0hm	Order Number
C092/4.7/140	4.70	0.52	134 0946
C092/5.6/140	5.60	0.56	134 0948
C092/6.8/140	6.80	0.66	134 0950
C092/8.2/140	8.20	0.75	134 0952
C092/10/140	10.0	0.87	134 0954
C092/12/140	12.0	0.99	134 0956