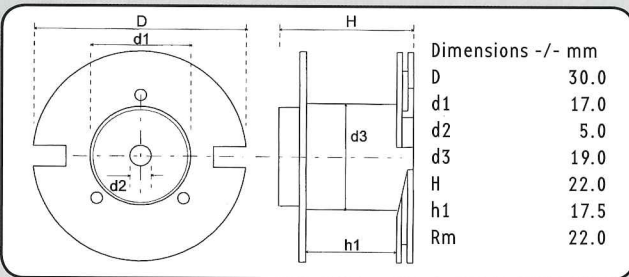


**COROBAR® - INDUCTORS**



Copper Wire Ø: 0.60 to 0.90 mm  
 CU Purity: > 99.99 %  
 Connection Length: 10 mm ab 92; 40 mm  
 Tin Coated Length: min. 9 mm  
 Reel Material: ABS  
 Core Type: COROBAR Core  
 L-tolerance: ± 5 %  
 L-Value: Nom. 25° C and 1 kHz



**CO 30/22**

**Corobar 30/22 • CU 0.90 mm • Cross-Section 0.64 mm<sup>2</sup> AWG 19**

Description	L/mH	R/0hm	Order Number
C030/010/090	0.10	0.10	150 0090
C030/012/090	0.12	0.11	150 0091
C030/015/090	0.15	0.12	150 0092
C030/018/090	0.18	0.13	150 0093
C030/022/090	0.22	0.15	150 0094
C030/027/090	0.27	0.17	150 0095
C030/030/090	0.30	0.17	150 0096
C030/033/090	0.33	0.18	150 0097
C030/039/090	0.39	0.20	150 0098
C030/047/090	0.47	0.23	150 0099

**Corobar 30/22 • CU 0.80 mm • Cross-Section 0.50 mm<sup>2</sup> AWG 20**

Description	L/mH	R/0hm	Order Number
C030/0.56/08	0.56	0.30	150 0100

**Corobar 30/22 • CU 0.71 mm • Cross-Section 0.40 mm<sup>2</sup> AWG 21**

Description	L/mH	R/0hm	Order Number
C030/0.68/071	0.68	0.40	150 0101
C030/0.82/071	0.82	0.45	150 0102
C030/1.0/071	1.00	0.51	150 0103
C030/1.2/071	1.20	0.57	150 0104

**Corobar 30/22 • CU 0.60 mm • Cross-Section 0.28 mm<sup>2</sup> AWG 23**

Description	L/mH	R/0hm	Order Number
C030/1.5/060	1.50	0.84	150 0105
C030/1.8/060	1.80	0.96	150 0106
C030/2.2/060	2.20	1.06	150 0107