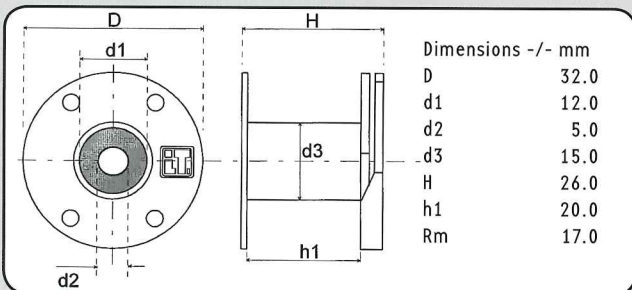


INDUCTORS FOR EQUALIZER NETWORKS



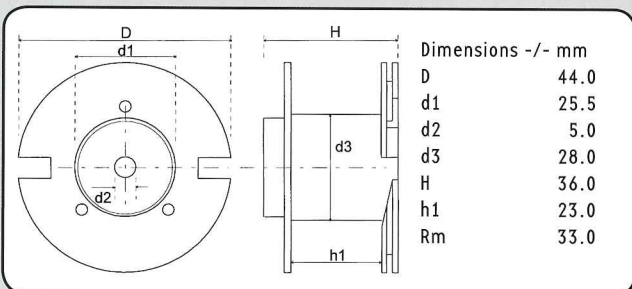
Copper Wire Ø: 0.50 mm - 0.60 mm
 CU Purity: > 99.99 %
 Wire Bonding Length: 10 mm
 Tin Coated Length: 9 mm
 Core Material: soft ferrite/Corobar
 L-tolerance: ± 5 %
 L-Value: Nom. 25° C and 1 kHz



HQR 32/26

HQR 32/26 • CU 0.60 mm • Cross-Section 0.28 mm ²			AWG 23
Description	L/mH	R/0hm	Order Number
HQR32/2.2/060	2.20	1.09	134 0960
HQR32/2.7/060	2.70	1.23	134 0962
HQR32/3.3/060	3.30	1.41	134 0964
HQR32/3.9/060	3.90	1.58	134 0966

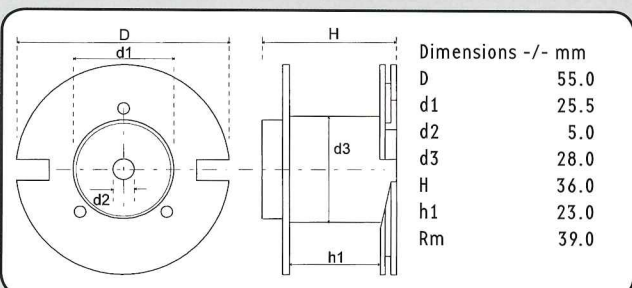
HQR 32/26 • CU 0.50 mm • Cross-Section 0.20 mm ²			AWG 24
Description	L/mH	R/0hm	Order Number
HQR32/4.7/050	4.70	2.31	134 0968
HQR32/5.6/050	5.60	2.56	134 0970



CO 44/36

CO 44/36 • CU 0.60 mm • Cross-Section 0.28 mm ²			AWG 23
Description	L/mH	R/0hm	Order Number
C044/6.8/060	6.80	2.02	134 0972
C044/8.2/060	8.20	2.27	134 0974

CO 44/36 • CU 0.50 mm • Cross-Section 0.20 mm ²			AWG 24
Description	L/mH	R/0hm	Order Number
C044/10/050	10.0	3.48	134 0976
C044/12/050	12.0	3.87	134 0978
C044/15/050	15.0	4.40	134 0980



CO 55/36

CO 55/36 • CU 0.60 mm • Cross-Section 0.28 mm ²			AWG 23
Description	L/mH	R/0hm	Order Number
C055/18/060	18.0	3.74	134 0982
C055/22/060	22.0	4.26	134 0984
C055/27/060	27.0	4.89	134 0986