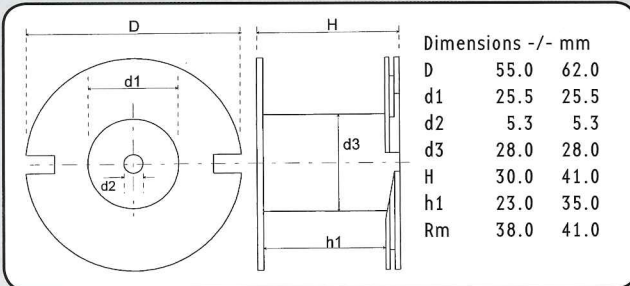


AIR CORE INDUCTORS AWG 15

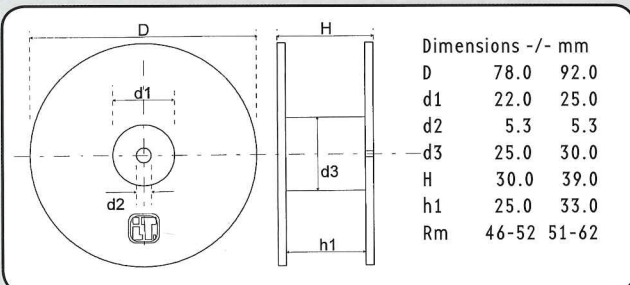

Copper Wire Ø: 1,40 mm
 CU Purity: > 99.99 %
 Wire Bonding Length: 10 mm ab 2.2 mH: 40 mm
 Tin Coated Length: 9 mm
 Coil Body Material: ABS
 L-tolerance: ± 3 %
 L-Value: Nom. 25° C and 1 kHz


LU 55/30 - LU 62/41
LU 55/30 • CU 1.40 mm • Cross-Section 1.54 mm² AWG 15

Description	L/mH	R/0hm	Order Number
LU55/010/140	0.10	0.08	134 0046
LU55/012/140	0.12	0.09	134 0047
LU55/015/140	0.15	0.10	134 0048
LU55/018/140	0.18	0.11	134 0049
LU55/022/140	0.22	0.13	134 0050
LU55/027/140	0.27	0.15	134 0051
LU55/033/140	0.33	0.16	134 0052
LU55/039/140	0.39	0.18	134 0053
LU55/047/140	0.47	0.19	134 0054

LU 62/41 • CU 1.40 mm • Cross-Section 1.54 mm² AWG 15

Description	L/mH	R/0hm	Order Number
LU62/056 /140	0.56	0.22	134 0055
LU62/068 /140	0.68	0.24	134 0056
LU62/082 /140	0.82	0.26	134 0057
LU62/1.00/140	1.00	0.28	134 0060
LU62/1.20/140	1.20	0.30	134 0061
LU62/1.50/140	1.50	0.34	134 0062
LU62/1.80/140	1.80	0.38	134 0063


LU 78/30 - LU 92/39
LU 78/30 • CU 1.40 mm • Cross-Section 1.54 mm² AWG 15

Description	L/mH	R/0hm	Order Number
LU78/2.2/140	2.20	0.46	134 0064
LU78/2.7/140	2.70	0.53	134 0066
LU78/3.0/140	3.00	0.60	134 0068

LU 92/39 • CU 1.40 mm • Cross-Section 1.54 mm² AWG 15

Description	L/mH	R/0hm	Order Number
LU92/3.3/140	3.30	0.60	134 0067
LU92/3.9/140	3.90	0.67	134 0069
LU92/4.7/140	4.70	0.74	134 0070
LU92/5.6/140	5.60	0.83	134 0071
LU92/6.8/140	6.80	0.93	134 0072