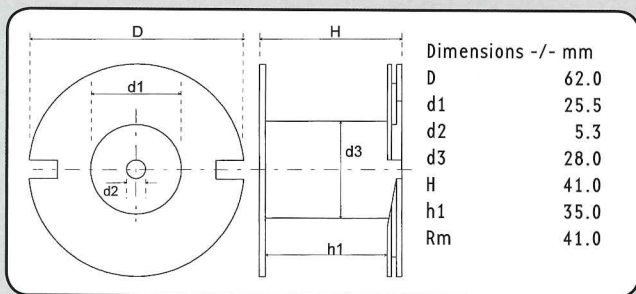


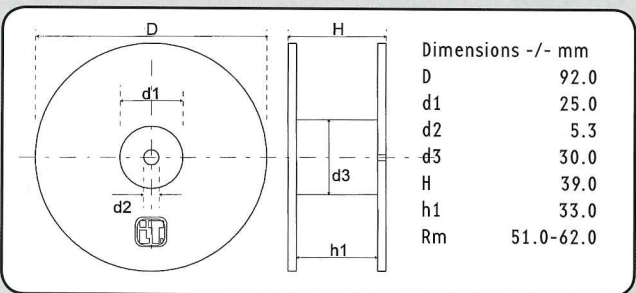
**AIR CORE INDUCTORS AWG 12**



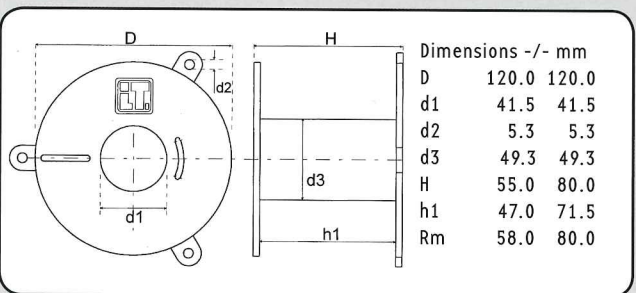
Copper Wire Ø: 2,0 mm  
 CU Purity: > 99.99 %  
 Wire Bonding Length: 40.0 mm ab LU 120 150 mm  
 Tin Coated Length: 9.0 mm  
 Coil Body Material: ABS  
 L-tolerance: ± 3 %  
 L-Value: Nom. 25° C and 1 kHz



**LU 62/41**



**LU 92/39**



**LU 120/55 - LU 120/80**

**LU 62/41 • CU 2.00 mm • Cross-Section 3.14 mm<sup>2</sup> AWG 12**

Description	L/mH	R/0hm	Order Number
LU62/010/200	0.10	0.050	134 0900
LU62/012/200	0.12	0.054	134 0902
LU62/015/200	0.15	0.061	134 0904
LU62/018/200	0.18	0.066	134 0906
LU62/022/200	0.22	0.074	134 0908
LU62/027/200	0.27	0.082	134 0910

**LU 92/39 • CU 2.00 mm • Cross-Section 3.14 mm<sup>2</sup> AWG 12**

Description	L/mH	R/0hm	Order Number
LU92/033/200	0.33	0.092	134 0912
LU92/039/200	0.39	0.100	134 0914
LU92/047/200	0.47	0.110	134 0916
LU92/056/200	0.56	0.120	134 0918
LU92/068/200	0.68	0.130	134 0920
LU92/082/200	0.82	0.150	134 0922
LU92/1.0/200	1.00	0.170	134 0924
LU92/1.2/200	1.20	0.180	134 0926
LU92/1.5/200	1.50	0.210	134 0928

**LU 120/55 • CU 2.00 mm • Cross-Section 3.14 mm<sup>2</sup> AWG 12**

Description	L/mH	R/0hm	Order Number
LU120/1.8/200	1.80	0.25	134 0074
LU120/2.2/200	2.20	0.28	134 0073
LU120/2.7/200	2.70	0.31	134 0075
LU120/3.0/200	3.00	0.33	134 0076
LU120/3.3/200	3.30	0.35	134 0077
LU120/3.9/200	3.90	0.39	134 0079
LU120/4.7/200	4.70	0.43	134 0081
LU120/5.6/200	5.60	0.47	134 0082
LU120/6.8/200	6.80	0.53	134 0083

**LU 120/80 • CU 2.00 mm • Cross-Section 3.14 mm<sup>2</sup> AWG 12**

Description	L/mH	R/0hm	Order Number
LU120/8.2/200	8.20	0.62	134 0084
LU120/10/200	10.00	0.69	134 0085